



in **SIDE**  
— your life

[www.saetsrl.com](http://www.saetsrl.com)  
[info@saetsrl.com](mailto:info@saetsrl.com)

**S.A.E.T. Srl**

Via Po, 13 • 12022 BUSCA (CN)  
Lat. 44° 30' 1" - Long. 7° 29' 30"  
Tel.: +39.0171.943959  
Fax: +39.0171.944831



engineering  
pcb

material  
management

prototype  
& production

technical partners:



gold partners:



[www.giletta.com](http://www.giletta.com)



[www.aquarama.it](http://www.aquarama.it)



SAET was founded in 1990 as a technological services partner for electronic and manufacturing industry; now, by using the most modern machines our company has been specialized in engineering and production of complex electronic boards.

Twenty years of activity and growth, supported by customer's trust, gave SAET experience and competencies to face high complexity projects.

SAET offers a global service; beyond design and production, we give all the services to optimize the final product.

Wiring harnesses, plastic and metal boxes, assembly, packaging completes our offer.

At your needing, we can offer all our experience and competence to give you a unique supplier, able to meet all your requirements in electrical and electronic field.

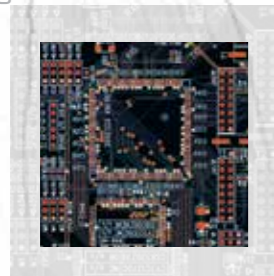


in **SIDE**  
— the company



in **SIDE**  
— your work

engineering  
pcb



**PCB engineering**

Our personnel closely cooperates with the customer to finalize his needing, while CAD-CAM and simulation tools make us highly skilled and competitive for all type of developments: flexible circuits, mono and multilayer, controlled impedance in all technologies SMD, PTH, BGA.

material  
managment



**materials management**

Our directional agreements with several component suppliers make us able to procure a wide range of parts, from PCB to packaging, setting our customer free from having to coordinate many different suppliers.

prototype  
& production



**prototypes and production**

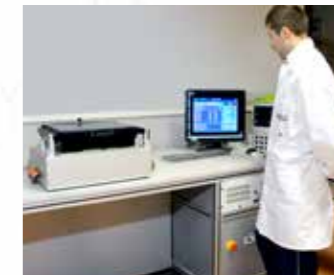
Our automatic production lines in PTH, SMD, BGA technology guarantee a fast and accurate assembly process, with high quality standards. Parametric, functional and optical testing guarantees the product quality before packaging and delivery.



Production line SMD1 (35.000Cp/h)

**OUR TOOLING**

- Assembly and reworking lines compliant for ESD;
- Lead-free double wave solder machines with automatic load/unload;
- Automatic screen printer with optical 2D-control of the soldering paste. Screens vacuum cleaning, integrated control of quality and production;
- Two production lines of automatic pick and place for SMT with a total capacity of 70'000 cp/h;
- New SMT Pick and place machines with optical positioning Feeder from size 8 to 44mm, up to 250 feeders available;
- Lead-free double wave solder machines and SMT forced ventilation oven working with 14 different range of reflow and 2 of cooling;
- Parametric and functional testers (fixture and flyprobe), optical and fuctional;



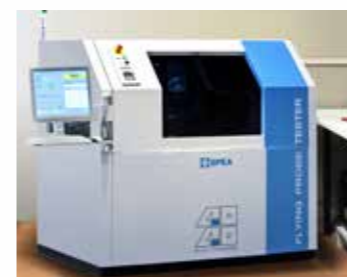
Multiapplication Functional tester



Parametric in-circuit test (fixture)



Automatic Optical Tester



Parametric in-circuit test (Flyprobe)



Functional test (dedicated)



Technical inspections